



# **R** READING MUSEUM

## **Social Story**

2022

## Welcome to Reading Museum!

This picture guide will help you find your way around Reading Museum's one way route. There are useful tips for activities you can do and a bit of information about the different objects you may see in the galleries. There is also information on the facilities available, including seating areas and toilets.



This is **Reading Museum**. It is a free museum open Tuesday to Saturday. You will enter the building through our main entrance with automatic sliding doors.



Our friendly staff at **Reception Desk** will answer any questions you may have about the museum, activities and accessibility.



Behind the Reception Desk on the right you can find our **Gift Shop** with loads of Reading themed gifts, Bayeux souvenirs and more.



The **toilets** are just through here behind the Reception Desk on the left. There is a code for the doors to enter on this keypad. Ask at Reception for the code.



This is the **museum entrance** past the Reception Desk on your left, either up the stairs or ramp.



As you enter the Museum you will be greeted by a member of staff or volunteer who will tell you what our museum has on display.



If you have any questions or need assistance while in the museum, find a member of staff with a **lanyard with a Reading Borough Council ID**.



The **Welcome Gallery** starts on your left and loops around. This Gallery features a video on the wall along with a sample of the Reading Museum's half-million item collection. **Foldable carrying seating** available to take with you around the museum can be picked up in this gallery.



You can find **guides and trails behind the blue Welcome Sign.**



Each object in the Welcome Gallery has a number next to them. This number matches a label you can find in these binders.



When you finish with the Welcome Gallery check out our **Community Case** with changing exhibits about Reading.



Walk towards **The Land Before the Town** case on your right. This case shows artefacts from Reading's earliest pre-historic settlers all the way to the Anglo-Saxons.

Evidence shows that Reading has been continuously occupied for at least 10,000 years.



Walk around the lift and under the **Story of Reading** Sign. You will see mannequins in this gallery. There will also be a human arm bone on display



As you enter you will find this capitol that came from Reading Abbey. You can touch it to feel the carvings.



Enter the small gallery here to find out more about the Reading Abbey.



There are three buttons that you can press to listen to sounds that could have been found in the Abbey.



Exit the small gallery and continue to your left where you can find cases about Reading in the 1600s.



On the left you can discover a portrait of Queen Elizabeth I painted from life.



Loop around the Ground Floor to follow the cases as they go through the history of Reading from the 1700s to the Present.

**Soft seating available in this area of the gallery.**

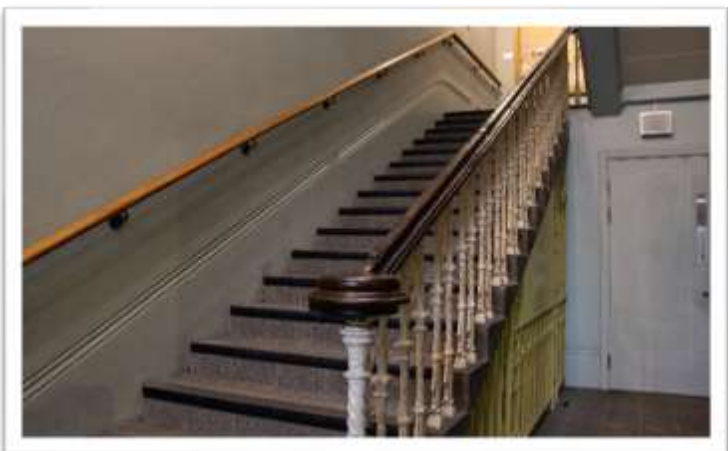


**Mannequin in this Section.**



At the end turn right and go through these double doors next to the Community Case to access the stairs

**Or you can take the lift on your right-hand side.**

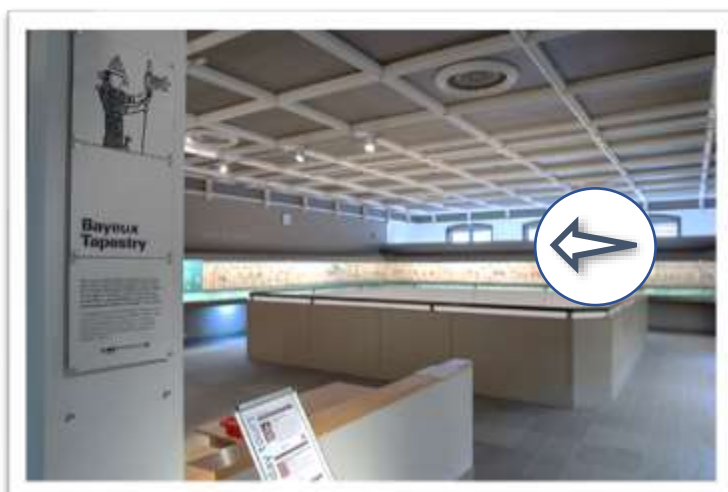


Go up the stairs to the first-floor landing.



Enter the door on the first-floor landing to enter the **Bayeux Tapestry Gallery**.

Our replica of the Bayeux Tapestry is 70 meters long, so it fills the entire first floor.



Bear right to start the loop around the gallery.

In this gallery you can find a replica of the Bayeux Tapestry. It was made by Victorian women embroiderers and depicts the events leading up to and including the Battle of Hastings.

**If You Have Taken the Lift:**

Walk straight past the doorway.



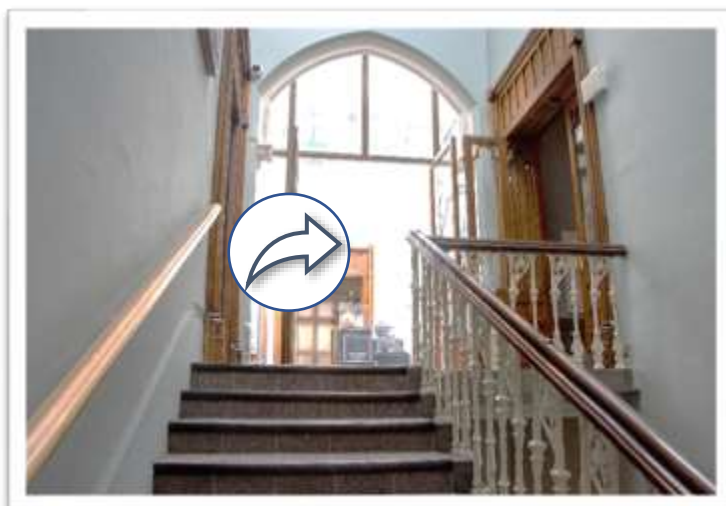


The Tapestry starts with King Edward on his Throne.

You can take a photo on the replica throne next to the fire exit doors.



Once you finish the first half of the tapestry walk towards the lift and turn left around the corner to continue around the tapestry.



When you complete the loop around Bayeux, exit and continue up to the top of the stairs. To continue the one-way route, go through the door on the left when you reach the top of the stairs. This will take you into the **Silchester Gallery**.



**If You Have Taken the Lift**

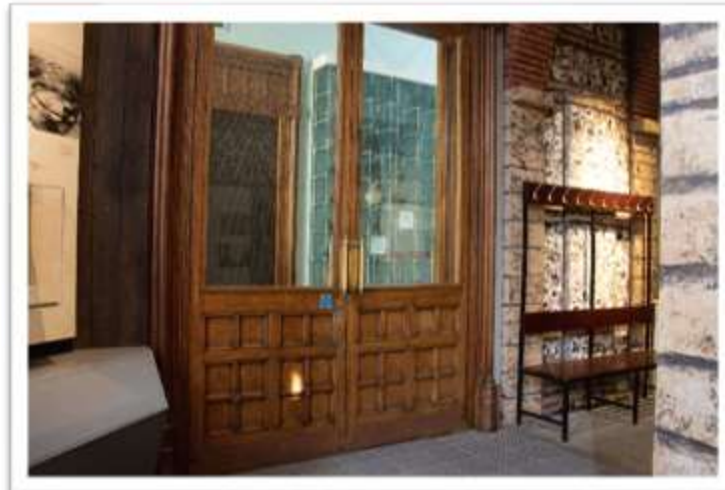
Walk straight out the lift and through the double doors in front of you. On the landing, turn left into the Silchester Gallery.



In this gallery, you can roam around the exhibits from the excavations at the Roman town at Calleva Atrebatum in Silchester.



In this gallery you can find the famous Silchester Eagle which inspired a novel and a movie.



Exit the Gallery via the double doors and enter the **Silchester Annexe**.



This alcove has **soft seating** and books for people of all ages to sit and take a break. There are two cases with examples of Roman pottery.



In the center case is a Roman decorated storage jar known as the Jubilee Pot. It is called the Jubilee Pot because it was found on the day of Queen Victoria's Diamond Jubilee.



Continue to the one-way route through the connecting double doors and you will enter the **Sir John Madejski Art Gallery**.

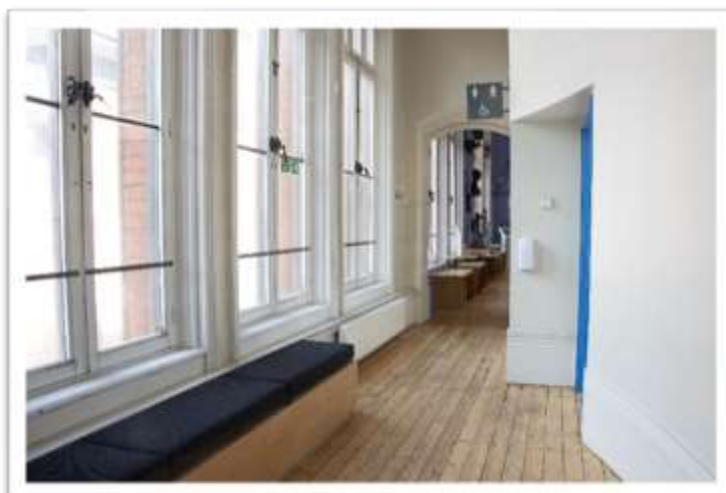


This gallery may look different as it is always changing!

This gallery hosts temporary exhibitions for you to enjoy.



Exit the Gallery through the double doors here.

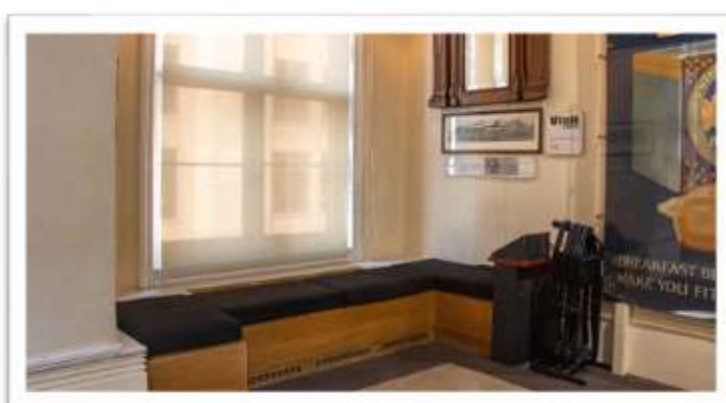


The upstairs **Toilets** are on the right with **soft seating** on the left. Continue straight to enter the **Windows Gallery**.



This gallery is named the Windows Gallery because it is a window on the Museum's varied collection of sculpture and decorative art seen in natural light.

Hard benches can be found on either side of the room next to the windows.



As you enter the Huntley and Palmer Gallery, on your left is a **soft seating area** with a headset audio interactive.



The Huntley and Palmer Gallery starts here. On your left is one long case. It has biscuit tins and other objects from the founding of Huntley and Palmer's Biscuit makers until they closed.

The gallery also includes interactives, maps, posters and two cases.



At the end of the Gallery, you will find an interactive that plays films about biscuit making.

**Soft seating is available here to watch the videos.**



Continue along the hallway on your right.

**Do not go up or down the stairs as they are fire exits or for staff only.**

At the end of the hallway, you will enter the **Green Space**.

**Taxidermy is displayed in this gallery.**



In the **Green Space** gallery, you will follow the story of our local environment from 400 million years ago to the present day.



Remember to say hello to and give a head pat to our mascot Bertie the Badger.



Once you have wandered through the Green Space exit into **the Atrium**

In the Atrium you can sit on **soft seating** and look at the most complete mosaics from Roman Silchester and enjoy the modern ceramics of Alan Caiger-Smith.



**You now have finished the one-way route!**

You can exit through these doors to access the stairs back to the ground floor. Or you can use the lift in the center of the Atrium.

---

*Thank you for visiting Reading Museum  
and we hope to see you again soon!*

---

